



The Leader in Nutritional Products for Whitetail Deer



For over 30 years, Antler King® has been helping hunters grow bigger bucks and healthier deer with food plots and supplements!

Deer hunters have always been mesmerized by and obsessed with the size of a buck's antlers. It should come as no surprise then, that some 30 plus years ago, Antler King® was started with the goal of applying science and nutrition to growing even bigger antlers.

Back then, we used to judge antlers by the number of points, a flawed method that soon gave way to measuring them in inches, or eighths of inches to be precise.

Yes, a lot has changed in three decades, but one thing has certainly not – Antler King's mission to grow bigger bucks and healthier deer through science and nutrition, by planting superior food plots and providing superior supplements.

Food Plots	Pages	4 – 10
Feed	Page	11
Supplements	Pages	12 – 17



"Nothing can match Antler King's quality. Antler King knows how to grow big healthy deer!! Since I have been using Antler King on my property I have consistently held more deer, grown bigger bucks and had a healthier overall herd!"
— Kip Campbell, Red Arrow® TV



"Keeping and managing big bucks on our property is what Whitetail Freaks is all about. Antler King products make this job easier. Bigger Bucks, Healthier Deer."
— Don and Kandi Kisky, Whitetail Freaks



The science behind attracting and growing bigger bucks

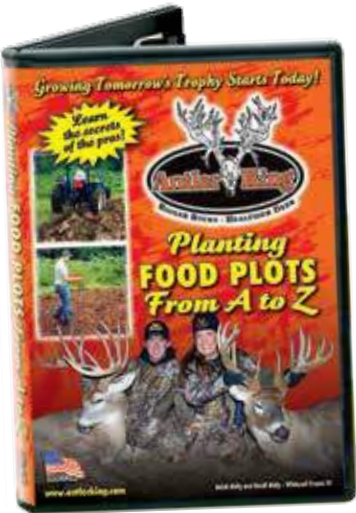
The fact is, a healthy buck that gets the right minerals and vitamins at the right times of the year, and that is best able to utilize the nutrition in the food it eats, is vastly more likely to reach it's genetic potential when it comes to antler growth.

This is precisely what Antler King® is all about, providing you with the ability to provide your deer with precisely what they need to maximize their antler-growing potential.

This effort can become quite involved, but truthfully, is really quite simple. Plant the right food plots and provide the right supplements. We cover everything food plot related in our DVD which is also available online at AntlerKing.com.

Here, you'll learn:

- What food plots to plant, where and when to plant them
- The importance of soil testing, liming and current fertilizer usage
- Ground preparation methods, weed control and plot maintenance
- Key food plot mistakes to avoid



"Year in and year out, quality food plots have been the key to my success as a whitetail deer hunter. Antler King offers a wide variety of quality seed blends and attractants that are unsurpassed in our industry."

— Justin Olk, DreamPoint's Game of Inches

pH Soil Plot Kit

Crucial to food plot success is knowing the pH of your soil. Our instant pH soil test kit is an absolute must!



Lime makes fertilizer work. Fertilizer efficiency goes up as soil acidity goes down. This 4-test pH kit will let you know your pH in 20 minutes without the need to send in samples!

Soil's pH	Fertilizer Wasted
4.5	71.34%
5.0	53.67%
5.5	32.68%
6.0	19.67%
7.0	0.0%

NEW FOR 2019



Wicked Clean Deer Corn

A series of four deer corn products, three of which are flavored, and all of which are triple cleaned so all you are paying for is the corn.



Bone Up™

50% more mineral for your bucks! It's important that all your deer get the mineral they need. Bone Up™ gives you 50% more mineral to make sure this happens!

Clover Fuel

Finally, a fertilizer product designed specifically to supercharge your clover food plot!



ANNUAL

Ultra Coat
ORANGE



3 lb. bag – plants 1/2 acre

Honey Hole

RAPE AND TURNIP
FALL/WINTER ANNUAL

Our #1 selling food plot product, Honey Hole is a fabulous northern hunt plot that grows even in tough conditions and deer love it!

- Features five varieties of rape and turnips
- Treated with Ultra Coat Orange for higher germination rates, increased forage yield
- Cool weather tends to increase consumption (we've seen a 3 ft. tall plot devoured in 10 days!)
- Plant late summer or early fall



"We trust all of our best plots to Antler King! Each Antler King plot seed is specifically designed to help you customize your land and plots. Antler King has a seed you can count on to grow and hold more deer!"
— Mike Pelletier, Hardcore Pursuit

PERENNIAL

Trophy Clover Mix

CLOVER/CHICORY PERENNIAL

WILL
LAST
6+
YRS

Ultra Coat
ORANGE



Available in 1/2 acre, 3 acre, 6 acre

The highest protein and tonnage-producing clover/chicory perennial food plot mix on the market!



Provides up to 10 tons of 30%+ forage per acre per year

- Includes four varieties of clover plus chicory
- Treated with Ultra Coat Orange for higher germination rates, increased forage yield
- Produces remarkable tonnage per acre
- Provides protein for antler growth
- Great food plot for deer, and turkeys too
- Plant spring and fall



"I harvested this magnificent buck on my small 36 acre property. The giant was only 4.5 years old and he unofficially grossed 221 4/8 inches non-typical. Using photos of the deer and his shed antlers, I estimate that this deer grew 65 inches last year! He is a genetic freak, but I believe that nutrition played a tremendous role as well. I harvested the buck on the edge of a field of Antler King® Trophy Clover Mix and he was photographed at my Antler King® Honey Hole plot as well. Antler King® products certainly helped this deer reach his genetic potential and I will continue to use Antler King® products in the future! Thank you, Antler King® for making a dream come true."

— Jerad Dreeszen

ANNUAL

Features Antler King
RADISHES



3.5 lb. bag – plants 1/4 acre

Slam Dunk

THE ALL-FALL ANNUAL
Early Fall (winter peas, buckwheat)
Late Fall (radishes, forage rape)

Double-duty Slam Dunk works all fall by providing peas and buckwheat early, and then radishes and forage rape later on. There's always something good to eat!

- Designed to always have something the deer want to eat – no dead time!
- In the Midwest or Northeast, plant between late June and early September
- In the South, plant between late July and early October



Kip Campbell, Red Arrow® TV



Pat McFadden



Tim Tibbits

PERENNIAL

WILL
LAST
4+
YRS



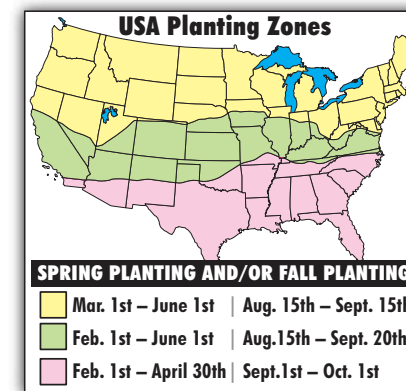
2.5 lb. bag – plants 1/4 acre

Game Changer

NO TILL/
MINIMUM TILL
Clover Perennial

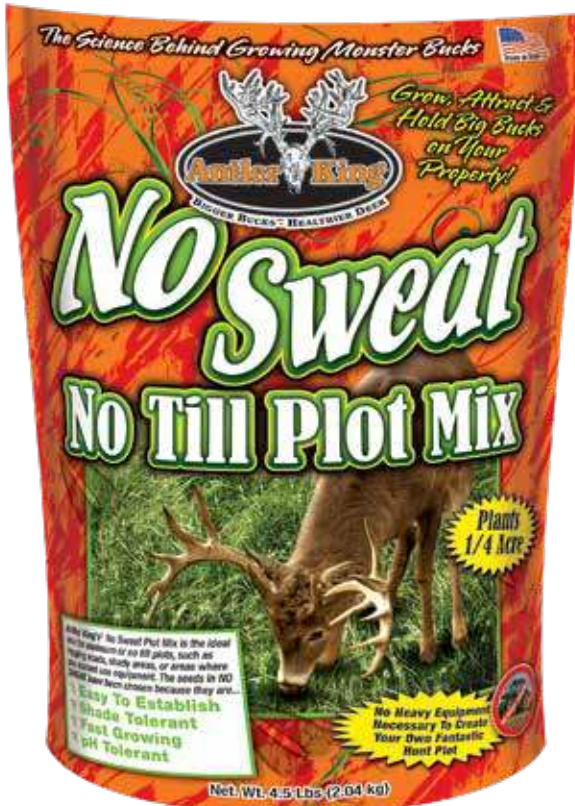
No heavy equipment needed to grow your perennial food plot! (Ideal for backwoods, hard-to-get-to areas, logging roads...).

- Shade tolerant; requires as little as 4 hours of sunlight per day
- pH tolerant; can grow in soils with pH as low as 5.0 (6.0 recommended)
- Will grow with little or no tilling and last 4+ years!
- Plant spring or early fall



Kip Campbell, Red Arrow® TV

PERENNIAL/ANNUAL MIX



4.5 lb. bag – plants 1/4 acre

No Sweat

NO TILL/MINIMUM TILL
Perennial/Annual Mix

Our easy-to-establish, fast-growing perennial/annual mix that allows you to plant a food plot in off-the-beaten-path places.



"I planted No Sweat two weeks ago ... this stuff is awesome!"
— John K.

- Shade tolerant so it will grow in the backwoods or on a logging road
- pH tolerant so it will grow in less-than-ideal soil conditions
- Little or no tilling needed
- Plant spring or fall



Jason Bosaw, Whitetail Freaks® TV

ANNUAL



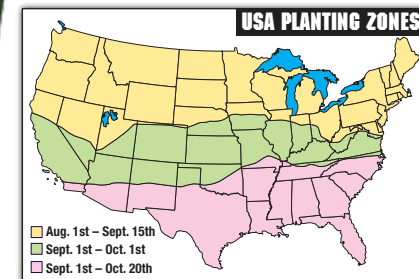
12 lb. bag – plants 1/4 acre

Lights Out

FALL/WINTER ANNUAL
(Forage Oats, Turnips, Canola)

If you want to hunt late season plant **Lights Out**. This Canadian seed mix is extremely weather/cold tolerant and will last into the winter.

- A mix of special cold tolerant forage oats, turnips and canola that are grown in Canada
- pH tolerant so will grow in most soils
- Fast growing, easy to grow
- Seeds need to be planted less than 1/2" deep



"Phenomenal, pretty much sums it up! The deer absolutely demolished my Lights Out plot, and what I do know is I need to plant more of it next year! Antler King® did it again with this mix, awesome!"
— Don Kisky, Whitetail Freaks TV

PERENNIAL/ANNUAL MIX



4 lb. bag – plants over 1/4 acre

Small Town Throwdown

THE ALL-FALL Perennial/Annual Mix

Double-duty Small Town Throwdown provides early fall attraction and late fall attraction by mixing a variety of different annuals and perennials!

EARLY FALL:

Clover
Chicory
Buckwheat

LATE FALL:

Kale
Rape
Rye

- Keeps deer coming to your plot as there is always something good to eat and frequently something new!
- Plant spring or fall



Brantley Gilbert, Country Music Artist

ANNUAL



17 lb. bag – plants 1/4 acre

Fall/Winter/Spring

This unique mix stays green all season and beyond to provide deer with much needed winter energy, plus up to 20% protein for bucks to grow next year's rack!



- Still green and providing food, energy and protein, well after everything else is dead or dormant
- Highly digestible so it allows bucks to re-gain weight lost during the rut
- Special blend of Antler King's winter peas and cereal rye
- Can grow 6" to 8" in just 10 days
- Can plow in spring to put nitrogen back into the soil
- Plant August through October

HIGH PROTEIN/HIGH ENERGY
Late/Post Season Annual



"I passed up this buck the previous year as a 3 year old while feeding in a Fall/Winter/Spring blend plot. Move forward one year and as a result of being on the Antler King® Minerals, Blocks and Food Plot program, he put on 40 plus inches of antler growth and held tight on that farm and was able to be harvested in December the next year."

— Kandi Kisky, Whitetail Freaks TV

ANNUAL



Red Zone

ALL-SEASON ANNUAL
(Forage Soybeans, Forage Peas,
Buckwheat and Sunflowers)

Plant Red Zone in the spring for a tonnage-producing, high protein plot that helps grow antlers. Plant in the summer/fall for a late maturing hunt plot.

- High protein forage – soybeans, peas, buckwheat and sunflowers – that mature at different times of the year
- Also provides high energy to all deer during the winter months
- Must plant at least 60 days before the first frost



"I planted the Red Zone seeds in September and the results are amazing! I keep getting hundreds of pictures on my deer cams including a deer that I knew was in the area, but was never able to capture...until now! Thank you for such an amazing product, I will definitely continue using Red Zone!"
— Cody Jarrett, Whitetail Freaks TV

FERTILIZER



Mix with water

Jolt

ALL-PURPOSE FOLIAR FERTILIZER
(The best way yet to fertilize your food plots)

The foliar fertilizer (absorbed by the plant through leaves/stems) is more reliable than granular fertilizers because you do not have to rely on rain to dissolve and wash down to plant roots.

- Mix with water and spray over any food plot with plants 3" tall or taller. Plants absorb through leaves and stem
- Spray weekly, bi-weekly or monthly
- Covers a 2-acre food plot once or a half acre food plot four times



The left half of this food plot was sprayed with Jolt, the right half was not (as divided by red rope)

ENHANCER

NEW!



On new plots use 2 bottles of Clover Fuel along with 20 gallons of water for each 1 acre plot PRIOR to planting. For existing plots, and for new clover plots, once the plants emerge, use 1 bottle with 10 gallons of water per acre.

Supercharge your food plots with all-new Clover Fuel. Clover Fuel will help your food plots grow faster, grow thicker and last longer!

- Designed specifically to enhance the performance of any legume-based food plot including:

Clover
Soybeans
Alfalfa
Peas

- Can be used effectively on new and existing food plots
- Can be mixed with other chemicals such as Plot Mix or grass killers

FUEL for Clover, Alfalfa, Soybeans, Peas and other legumes

Clover Fuel

"CLOVER FUEL is the most exciting product to hit the food plot industry in the last 10 years! We have a liquid fertilizer that can be used prior to planting and then used as a foliar fertilizer after the plants emerge. CLOVER FUEL is targeted for legume species only, so it will only benefit the growth of clovers, alfalfas, soybeans, peas, and any other legumes. What a fantastic product to stimulate clover growth, increase tonnage, and longevity of your clover plots!"
— Todd Stittleburg, Founder
Antler King Trophy Products, Inc.

SOIL CONDITIONER



Mix with 8 gallons of water to treat 1/2 acre Can mix with contact weed killer (RoundUp) and apply in one pass.

Plot Max

CARBON-BASED SOIL CONDITIONER
(a must for every food plot!)

Derived from a product developed to fix "dead soil," this amazing soil conditioner optimizes seed germination and plant root development, raises soil pH, unlocks available minerals and nutrients, and enhances moisture retention. And, it contains humic acid which can bind CWD prions in the soil!

- Test below shows food plot sprayed with Plot Max spiked pH while also dramatically increasing organic matter and available minerals and nutrients!

pH ↑ 20% ↑ 50% ↑
organic matter available minerals & nutrients



Half of Food Plot Sprayed with PLOT MAX



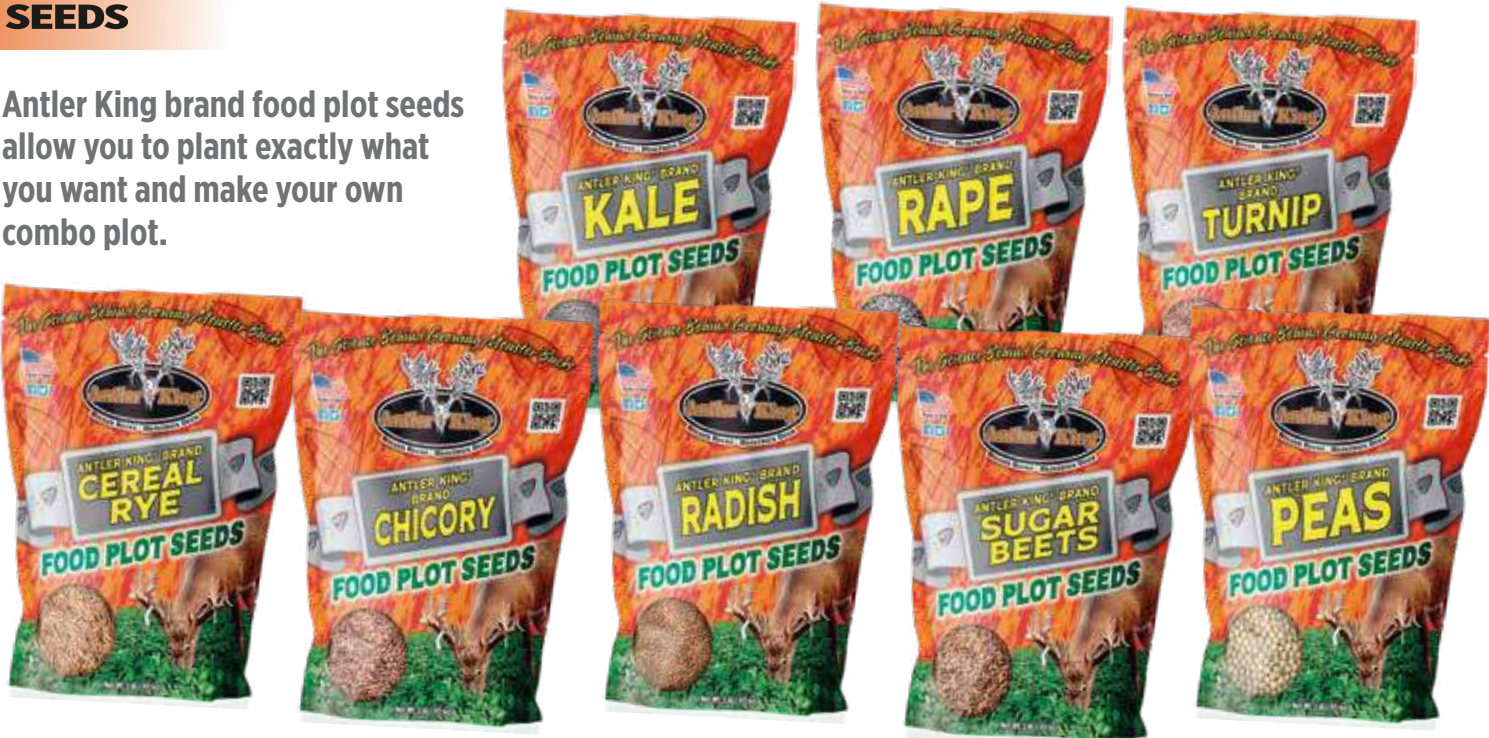
Half of Food Plot NOT Sprayed with PLOT MAX



"With Plot Max you'll see higher yields, which creates more forage and will ultimately keep more deer in your area. Healthier plots equals healthier deer!"
— Mike Pelletier, Hardcore Pursuit

SEEDS

Antler King brand food plot seeds allow you to plant exactly what you want and make your own combo plot.



- Chicory**
Special hardy cool season perennial. Grows fast, drought and pH tolerant. Plant alone or mix with grain, clover, 1 lb. will plant 1/4 acre.
- Kale**
Highly sought food source sweetened by frost. Grows best in cooler climates. Prefers pH of 5.5 to 7.0. 1 lb. will plant 1/8 acre.
- Radish**
Easy to establish, fast growing and cold tolerant. “Greens” are packed with protein and vitamins, roots with energy. 1 lb. will plant 1/10 of an acre.
- Sugar Beets**
Packed with protein and energy. Plant spring or summer for fall, winter. Works best as stand alone crop. 1 lb. will plant 1/8 acre.
- Turnips**
An ideal addition to virtually any food plot. The deer will consume the turnip “greens” and then also eat the high energy enriched turnip bulb. 1 lb. will plant 1/10 to 1/8 of an acre.
- Winter Peas**
Winter Peas are best planted in late summer or early fall and will be an immediate draw for your deer herd. Peas work great when mixed with other food plot seeds. 1 lb. will plant approx. 1/40 of an acre.
- Rape**
Ideal late season food source. Rape has a tendency to be a sought after food source by deer shortly after the first killing frost. 1 lb. plants 1/4 acre.
- Cereal Rye**
Very pH tolerant/drought tolerant and very user friendly from a planting standpoint. Grows very fast and deer love this variety. 1 lb. plants 1/60 of an acre.

<i>Antler King® Seed Mix</i>	<i>Perennial or Annual</i>	<i>Planting Time</i>	<i>pH Level Required</i>	<i>Seeding Rate</i>	<i>Seed Depth</i>	<i>Proper Fertilizer</i>	<i>Option with JOLT or CLOVER FUEL</i>
Honey Hole	annual	late Summer or early Fall	6.0 & above	6 lbs./acre	¼ inch or less	19-19-19 or 13-13-13 300 lbs./acre	200 lbs./acre plus 2 Applications of Jolt
Slam Dunk	annual	Summer or early Fall	6.0 & above	14 lbs./acre	½ inch or less	19-19-19 or 13-13-13 300 lbs./acre	200 lbs./acre plus 2 Applications of Jolt
Trophy Clover	perennial	Spring or Fall	6.2 & above	7 lbs./acre	¼ inch or less	5-15-30 300 lbs./acre	200 lbs./acre plus 2 Applications of Clover Fuel
Game Changer	perennial	Spring or early Fall	5.5 & above	10 lbs./acre	¼ inch or less	5-15-30 300 lbs./acre	200 lbs./acre plus 2 Applications of Clover Fuel
No Sweat	Mix of annual & perennial	Spring or Fall	5.5 & above	18 lbs./acre	¼ inch or less	13-13-13 or 19-19-19 300 lbs./acre	200 lbs./acre plus 2 Applications of Jolt
Small Town Throwdown	Mix of annual & perennial	Spring or Fall	6.0 & above	16 lbs./acre	¼ inch or less	5-15-30 or 9-23-30 300 lbs./acre	200 lbs./acre plus 2 Applications of Jolt
Lights Out	annual	Summer or early Fall	6.0 & above	48 lbs./acre	½ inch or less	19-19-19 or 13-13-13 300 lbs./acre	200 lbs./acre plus 2 Applications of Jolt
F/W/S Blend	annual	Fall only	5.5 & above	68 lbs./acre	1 inch or less	19-19-19 or 13-13-13 300 lbs./acre	200 lbs./acre plus 2 Applications of Jolt
Red Zone	annual	Spring, Summer, Fall	6.0 & above	40 lbs./acre	1 inch or less	19-19-19 or 15-15-15 300 lbs./acre	200 lbs./acre plus 2 Applications of Jolt

CORN



Wicked Clean

TRIPLE-CLEANED DEER CORN **NEW!**

We get rid of the “trash” before we put the corn in the bag!

Triple-cleaned to ensure you’re only paying for the corn.

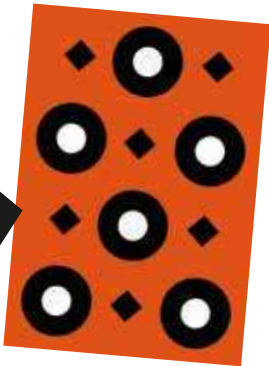
- DEER CORN 1
- Scalped to remove stalk and cob
- 2
- Screened and aspirated to remove residue
- 3
- Screened again before bagging

Wicked Clean Flavored Deer Corn

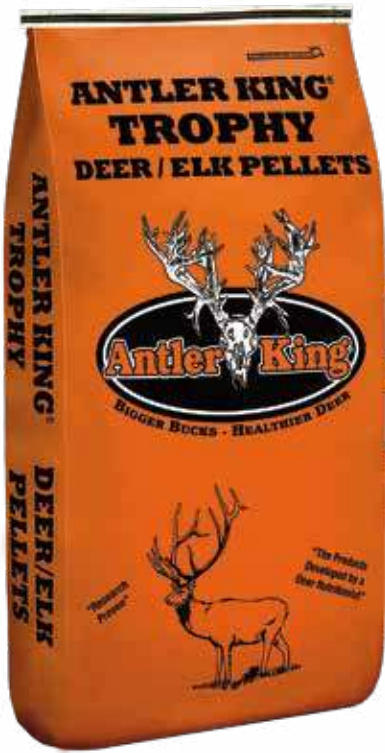
Aromatic INTENSITY™ flavor coating enhances attraction.

- We go to great lengths to ensure the corn you are buying is as clean as possible and without stalk, cob and other trash
- Flavored versions (Sweet Apple, Peanut Butter and Persimmon) all include coating with digestive aids and probiotics which help deer digest everything they eat

Free target on the back of the bag!



FOOD PELLETS



Deer/Elk Pellets

HIGH-PERFORMANCE/ HIGH PROTEIN FEED

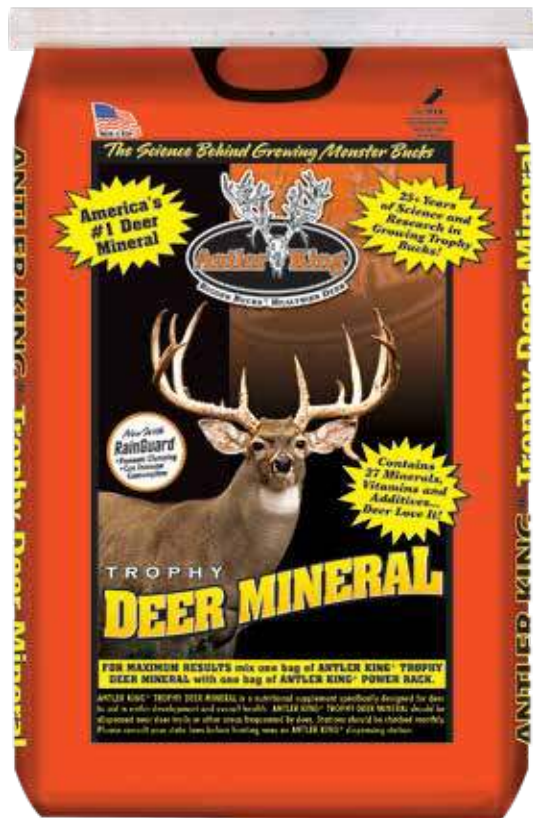
This high-performance, high-protein deer/elk feed is designed to help both deer and elk to reach their genetic potential!

- The result of research on how feed can enhance deer/elk health and antler growth
- High protein formula for antler growth
- High levels of vitamins and minerals
- Contains a special yeast culture that enhances digestion
- “Locked formula” manufacturing ensures consistent feed
- Used by deer/elk ranchers, landowners and backyard feeders



“This bull scores 570+, (his score was 443 0/8 as a 3 year old) measured by North American Elk Breeders trained antler scorers. At Mariah Elk Farm we use Antler King® Deer and Elk Pellets as our base feed, along with Antler King® Trophy Minerals. I don’t think anyone could argue the results, we are pleased and will continue using your fine products.”
— Bob Root, Mariah Elk Farm

MINERAL



20 lb. bag

"Trophy Deer Mineral has made a huge difference in not only the antler growth of my bucks but the overall health of the whole herd. From the smallest fawns to the biggest bucks they all frequently visit my mineral sites and from the holes they've dug in these sites it's easy to see just how much they like it."
— Danny Robinson



Trophy Deer Mineral

The #1 Deer Mineral

The original Antler King product, that after over 30 years on the market and several enhancements, is still the #1 deer mineral!

Contains
27
Antler Building
Vitamins, Minerals
& Additives

- Contains 27 different proven antler growing vitamins, minerals and other additives
- Special yeast culture helps deer better digest all of their food
- Comprised of highly digestible chelated minerals
- Greatest consumption will be February through September
- Just pour contents onto ground, deer trail



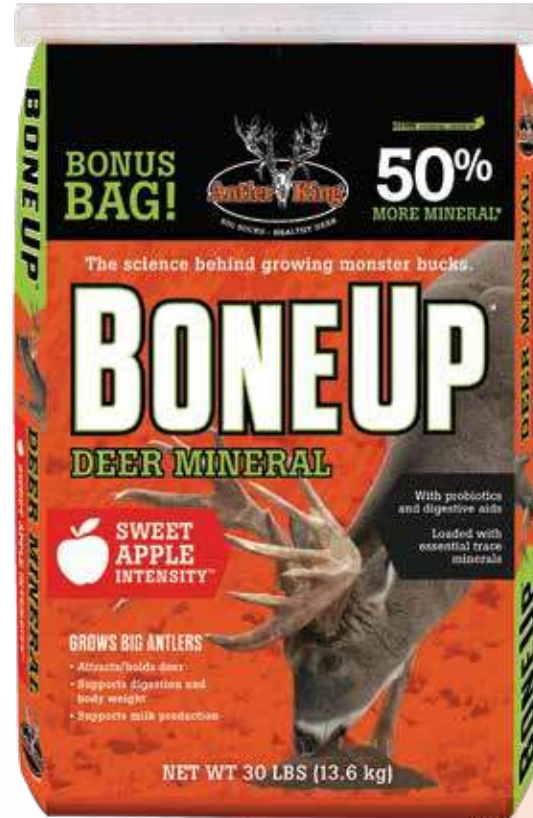
"If you want to put inches on your deer then check out Trophy Deer Mineral. You will be amazed at the results. After using it for 5 years on this farm, this picture is proof that Trophy Deer Mineral works!"
— Steve Kuney

"I've used Trophy Deer Mineral on my farms for many years and find it gives the nutrients deer need for Antler growth and all around health of the herd!"
— Stuart Cartwright



"I have used Antler King Trophy Deer Mineral for many years. Over the years I have seen a very large boost in antler growth in bucks. Trophy Deer Mineral provides deer with 27 different antler building minerals, vitamins and additives. Also, does and fawns benefit from Trophy Deer Mineral."
— Jason Buell

MINERAL



30 lb. bag

MINERAL



5 lb. bag

Bone Up™

More mineral for the bucks

NEW!

Bone Up™ gives you more mineral to put out for your deer. This means fewer replenishing trips and more mineral for all deer.

- Deer need trace minerals for antler growth and extra salt in their diet during early spring to mid summer when sodium levels in forages decrease
- Bone Up™ is loaded with essential trace minerals
- Bone Up™ also contains probiotics and digestive aids which help deer digest all foods



"Antler Kings Attractants, Blocks, Minerals and Supplements make it easy for you to see what deer are frequenting your property. Each one is specifically designed to give the deer what they need when they need it. They're all loaded with all the best Vitamins and Minerals too!"
— Mike Pelletier, Hardcore Pursuit

50% more mineral for the money!

Power Rack

Rich in Trace Minerals

- Loaded with special antler and body-boosting trace minerals
- Grows antlers and enhances overall deer herd health
- Use by itself or in conjunction with Trophy Deer Mineral or Bone Up



— Ian Eckerstorfer, Maryland





Kaleb Kisky



Kandi Kisky



Don Kisky

BLOCK/MINERAL/ATTRACTANT

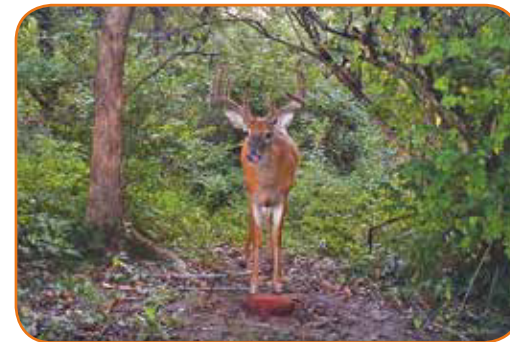


20 lb.

Apple Burst Block

Huge 20 lb. Block fortified with vitamins/minerals.

- Long-lasting 20 lb. block requires fewer visits to check or replace
- Fortified with essential vitamins, minerals
- Irresistible Apple Burst flavor and smell
- Promotes antler growth and keeps deer on your property



5 lbs.

Apple Burst Attractant

Pour out and get ready to hunt!

- Pour directly on the ground in 2-3 inch deep strips, in small piles in your hunting area, or in front of your game cameras.
- Add this irresistible apple-flavored attractant to trough-style feeders with your regular feed to increase consumption and attraction.
- Use as a feed topper/additive or in gravity feeders by carefully stirring the product in with your regular feed to help avoid any clogging when dispersing.



5 lbs.

Apple Burst Mineral

MEGA fortified with specific trace minerals for antler growth and improved overall health.

- Greatest consumption occurs during antler growth and when fawns are nursing on does. Although consumption drops dramatically after the antlers are developed, it is important to have available YEAR-ROUND.
- 5 lb. bag makes a one-pile feeding station for a 40-60 acre area.
- Make one feeding station on the ground near deer trails or other areas frequented by deer; check weekly and add more when needed.



"Quality land management is all about making your farm more attractive than everyone else's, and Antler King gives me the tools I need to fully address the year-round nutritional needs of Midwestern whitetail deer."

— Tyler Rees, Whitetail Freaks TV

BLOCK

Energy Plus

ENERGY/PROTEIN BLOCK

With 16% protein and 3% fat for energy, the Energy Plus Block is both a great fall attractant and a must for winter feeding.

16% Protein

- Research shows that fat/energy is crucial to deer in the winter, especially for bucks after the rut. That's why the Energy Plus Block contains 3% fat
- Research also shows bucks need a minimum of 16% protein for antler growth.
- Includes high levels of antler building vitamins and minerals



Don Kisky, Whitetail Freaks TV



3% fat (energy), 16% protein
7.5 lb. block

BLOCK

Hi Protein Big Buck

PROTEIN/MINERAL BLOCK

18% Protein

- Extreme size – 25 lb block is designed to last a long time
- Contains a special concentrated yeast culture that allows digestion, making food easier for deer to digest and put more nutrients into bone/antler
- 18% protein for antler growing
- Contains high levels of chelated antler-building minerals
- Ideal for ranchers, landowners and backyards, too



18% protein
25 lb. block

With **YEAST CULTURE**
to promote digestion



"We have used Antler King's® Blocks, Minerals, and Food Plot Seeds on the Lee farm in Georgia for many years and have seen a huge increase in the number of deer we see, larger racks on the bucks and an overall healthier deer herd."

— Michael Lee, Backwoods Life® TV

ATTRACTANT

Generation
NEXT



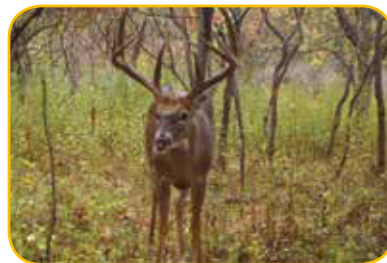
20 lb. bag

Attract-N-Fuel

ATTRACTION/
ANTLER GROWTH

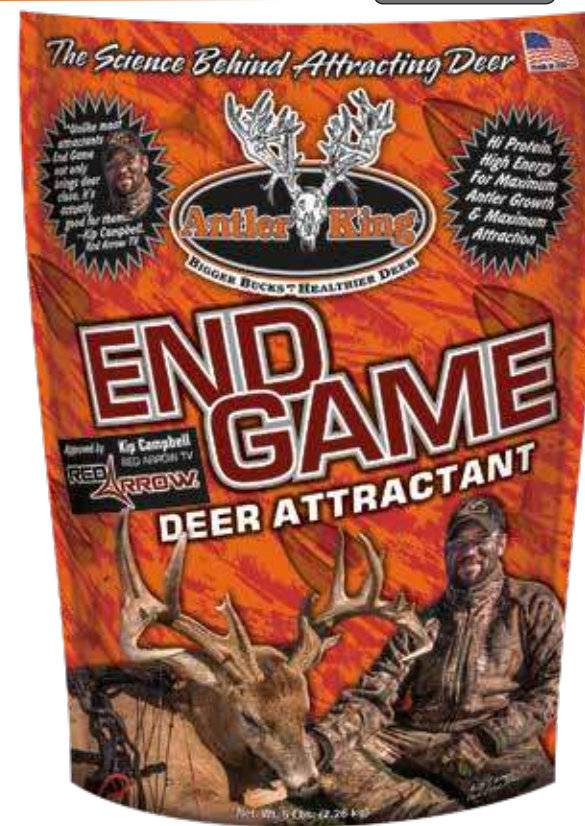
Attract-N-Fuel features a proprietary flavoring derived from extensive research and Generation Next Technology which enhances overall digestive abilities.

- Nothing tastes as good to deer thanks to proprietary flavoring
- Generation Next technology, a special yeast culture, improves rumen function which supports body mass, antler growth, overall health and milk production in does
- By improving digestibility and retention of protein and macrominerals, more key nutrients are available for antler growth



ATTRACTANT

2X
More
Attraction



5 lb. bag

End Game

LONG RANGE ATTRACTANT

This long range attractant features proprietary flavoring and is chock full of critical antler-growing protein and much-needed energy.

- Enhanced with flavoring that out-attracts deer 2 to 1 versus other attractants
- Use as a high energy fall attractant in front of your stand or game cameras
- Use as a high protein supplement to maximize antler growth in spring or summer

Endorsed by Kip Campbell, Red Arrow® TV



"End Game is the best attractant I've seen. It constantly brings bucks into bow range for me and when used in the off season, makes a big difference in antler size from year to year! Once they get a taste of it, they can't get enough!"
— Kip Campbell, Red Arrow® TV

ATTRACTANT

Generation
NEXT



1 lb. bag treats 500 lbs. of corn

Sweet Apple Intensity

CORN/FEED ADDITIVE

2X
More
Attraction

Super-concentrated, apple-flavored powder makes ordinary corn and feed much more attractive to deer; includes digestive aids.

- Intensity sweet apple scent will attract more deer. Field test show feed containing Intensity is consumed 2x faster than feed topped with other attractants
- Also contains concentrated Generation Next yeast culture to support digestion by enhancing rumen function; enhances conversion of feed to energy, synthesis of amino acids, protein, vitamins and more
- Can use as a cover scent too!



Antler King products will absolutely help you hold more deer and kill bigger bucks no matter how much land you hunt. Antler King helped me grow and kill my biggest buck yet in my home state of Virginia! Y'all keep doing what you do Antler King so we can keep being successful at what we love!"

— Kip Campbell, Red Arrow

ATTRACTANT

2X
More
Attraction



5.5 lb. bag

Final Feast

ALL PURPOSE ATTRACTANT

Combine tested proprietary flavoring and irresistible ingredients derived over 30-years of deer nutrition research and you get Final Feast!

- Proprietary flavoring outperforms other well-known attractants by 2x!
- Ideal product for placing in front of your game cameras or your stand
- An additive and Irresistible all-season attractant



Kyle Wieter, Adrenaline Junkies® TV

T-Shirts / Hoodie

Antler King® logo t-shirts...the most comfortable shirt you will ever wear and the durability to stand up to our “work hard, play hard” mentality. Form fitting, light weight, and fit true to size! Sizes: S to 2XL.



Kat Campbell
Red Arrow® TV



Brantley Gilbert
Country Music Artist



Kip Campbell, Red Arrow® TV



Kat Campbell, Red Arrow® TV

Distressed Tan Antler King® Logo Shirt.

100% ringspun cotton



Black shirt with distressed Antler King® logos imprinted front & back

Pre-shrunk 100% cotton



Cody Jarrett, Whitetail Freaks® TV

Gray shirt with distressed Antler King® logos imprinted front & back

50% Polyester, 25% Cotton, 25% Rayon



Ashley Paneitz, Antler King® Pro-Staffer

Long Sleeve Antler King® Logo T-Shirt

Available in Ash or Black. 100% Cotton. Crew neck. Large screen printed logo on back and small logo on front left chest. Sizes: S – 2XL



Charcoal/Black Antler King® Logo Camo Hoodie

Stand out from the crowd in this performance fleece Antler King® Digital Camo Hoodie that fits true to size, is lightweight, comfortable and breathable. Sizes: S – 2XL

Hats / Beanie / Mug

Antler King® Camo Hats

Relaxed fit, unstructured, Velcro® closure with embroidered logo front and back.



3-D Raised Lettering

3-D Raised Logo



Brown Distressed
Leather-look
with Camo



Green
Camo



Antler King® Trucker Hats

3-D raised embroidered hats. Black grunge patterned front and visor with orange mesh back. Pre-curved visor with eight rows of stitching and adjustable-back, Velcro® closure.



Kandi Kisky, Whitetail Freaks® TV



Antler King® Black Beanie

- Great warm hunting hat
- Made of 100% acrylic
- Cuffless style
- One size fits all
- Embroidered Logo
- Made in the USA!



Antler King® Travel Mug

Our insulation, stainless steel, 20 oz. travel mug has a snug fitting lid with sliding closure. Keeps drinks cold or piping hot longer.

Black coated exterior with orange Antler King Logo.

Aluminum Signs / Decals

WARNING NO TRESPASSING

PREMISES UNDER VIDEO SURVEILLANCE

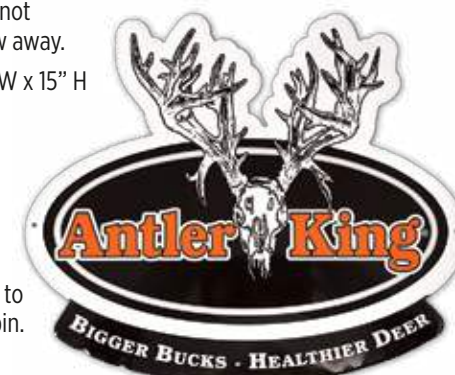
TRESPASSERS WILL BE PROSECUTED

PROPERTY MANAGED WITH ANTLER KING PRODUCTS



Warning No Trespassing Sign

- Let potential trespassers know that you use trail cameras on your property and if they trespass they have a great risk of getting their picture taken. Rest assured... they will think twice about trespassing.
- Lasts ten or more years.
- Durable, heavy-duty aluminum, will not blow away.
- 10" W x 15" H



Antler King® Logo Sign

- Aluminum die-cut sign, great to proudly display on your hunting land, to hang in your man cave or hunting cabin.
- 10.5" H x 12" W



Window Decal

Silver & Orange Die-Cut. Available in two sizes: 6" x 8" or 13" x 16".



Peel & Stick Decal

Great for windows, gun/bow cases, doors, refrigerators. White vinyl with black & orange screen printed logo. Size 4" x 6".





"Antler King's germination rate is by far the best I have ever used throughout my different types of soil conditions."

— Ben Rising, Whitetail Edge TV



"I've been using Antler King for years now and there isn't a better quality seed that performs in climates all over the country. We have deer on our property year round due to the high quality food plots we are able to have."

— Michael Lee, Backwoods Life



"It takes diversity to hold mature bucks, and Antler King products play a huge role in maintaining the right age-class of deer on our farms."

— Spenser Atwood, Whitetail Freaks

MANAGEMENT CALENDAR

February, March, April, May

- Great time to use our Instant pH Soil Test Kit to test your soil and apply the proper amount of lime to your plots.
- Apply your spring application of Antler King's® Plot Max prior to planting plots.
- Red Zone, Trophy Clover, No Sweat, Game Changer Clover, SmallTown Throwdown and Antler King® Brand Chicory can be planted as early as February in the deep South, but wait until April and May in the North, unless frost seeding Trophy Clover Mix, or Game Changer Clover.
- As soon as your Food Plots start sprouting in the Spring, it is time to give those plots an application of Antler King's® Plot Max and Jolt Foliar Fertilizer.
- Establish mineral sites with Antler King® Trophy Deer Mineral, Power Rack Mineral, Bone Up Mineral, Apple Burst Mineral, and Apple Burst Deer Block. While you will find that the greatest consumption of these four products will be from February to September, it is important to keep these sites full of Mineral all year around. Continue your winter feeding program with the Antler King® Hi Protein Big Buck Block, Energy Plus Wildlife Block, Sweet Apple Intensity and Attract-N-Fuel.
- Spray Clover Fuel on new or existing plots.

June, July, August, September

- Use our Instant pH Soil Test Kit to test your soil before planting your fall plots, till in the lime and apply a fall application of Plot Max to ensure a maximum yield.
- Red Zone food plot can be planted during this period, just make sure it has 60 days to grow before the first frost.
- Antler King® Brand Radish, Kale, & Sugar Beets; Honey Hole; and Slam Dunk food plots can be planted as early as July in the North, wait until August or September in the South.
- Fall/Winter/Spring Blend, Trophy Clover, Small Town Throwdown, Game Changer Clover, Lights Out and No Sweat food plots can be planted late August in the North, wait until September or October in the South.
- Apply Antler King's® Jolt as often as you desire to encourage maximum growth in your food plots.
- Use Final Feast, End Game Attractant, Apple Burst Attractant, Sweet Apple Intensity and Attract-N-Fuel in front of your deer cameras to scout and get bucks accustomed to coming to those locations.
- Spray Clover Fuel on new or existing clover and legume plots.
- Continue to monitor your Antler King® mineral and block sites and add more product to the lick as needed.

October, November, December, January

- You may apply Antler King's® Jolt up until frost stops the growth of your food plots.
- Get ready to start your winter feeding program or continuing a year-round feeding program by utilizing Deer/Elk Protein Pellets, Energy Plus Wildlife Blocks, Hi Protein Big Buck Blocks and Attract-N-Fuel.
- Sweet Apple Intensity is a tremendous attractant you can add to corn and use for baiting.
- Use Final Feast, End Game Attractant, Apple Burst Attractant, and Attract-N-Fuel to entice deer and be assured, they'll keep coming back for more!
- Spray Clover Fuel on new or existing clover and legume plots.

****Please follow all state and local laws and regulations that pertain to deer baiting and wildlife feeding.***



Antler King®



7148 State Highway 199, Upper Sandusky, OH 43351

715-284-9547 | e-mail: antlerking@antlerking.com | www.antlerking.com